

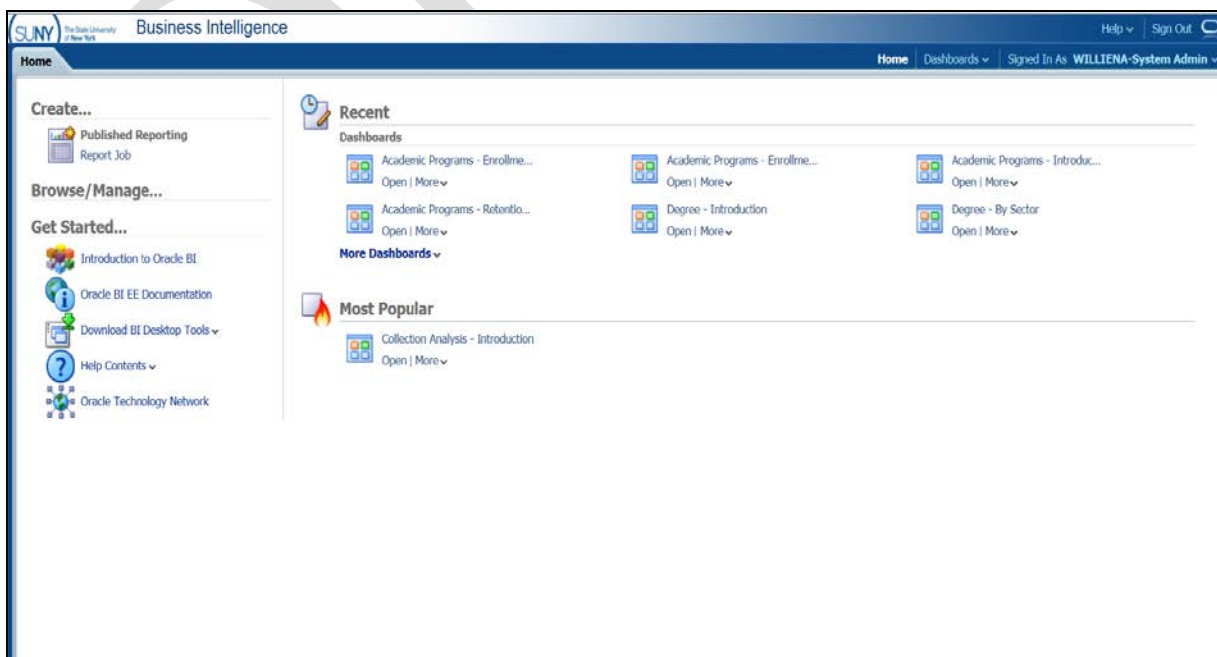
Quick Guide: Academic Programs Dashboard

The SUNY Academic Programs Dashboard supports program planning and assessment by enabling users to create customized reports about academic programs offered by every SUNY campus.

Secure Sign On. Go to <https://www.suny.edu/analytics/saw.dll?biehome>. If you do not have access, contact your Campus Security Officer to request it.



Dashboard Main Page. Select *Get Started* options (left side of page) for an orientation. Select *Dashboards* (upper right, blue menu bar) and choose *Academic Programs* from the dropdown menu.



Academic Programs Main Page. Use the tabs at the top of the page to select report content.

Academic Programs Dashboard

Academic Programs Dashboard Pages This dashboard permits users to view tables and graphs that show six years of academic program-level enrollment, first-year retention rates or degrees awarded. Each table includes the latest five year change and the associated percent change. The default display is all associate (or all baccalaureate) programs at the user's campus. To change the default, the user may select the desired changes and click GO.

The three enrollment dashboard pages and the retention trend page will allow the selection of academic programs based on any combination of campus, specific award, discipline (CIP2), program name and student workload. Click on a tab above to select a dashboard page

- Enrollment Trends by Program** – Enrollment is arrayed by academic program, discipline (CIP2 – CIP6) and specific award.
- Enrollment by Student Characteristics** – Demographic groups are arrayed by academic program, discipline (CIP2), and specific award. Possible demographic displays include gender, race/ethnicity, age group and student workload (full/part).
- Enrollment by Residency** – Student's permanent residence is arrayed by academic program, CIP2, and specific award. Possible residency tables include breakdowns by NYS, Other US, International, along with various reports organized by NYS county and regions.
- Retention Trends** – First-year retention is arrayed by program, discipline (CIP2) and award. Optional breakdowns are available by gender, race and residence. Exercise caution when viewing baccalaureate programs, since the performance of first-year cohorts may be misleading. Many academic programs limit or prohibit first-year matriculation, so the displayed results may not represent typical student outcomes.
- Degrees Granted Trends** – Counts of degrees awarded by program, discipline (CIP2), and award are reported. Optional breakdowns are available by gender or race.
- GPA for Degree Recipients** – Counts of degrees awarded and the associated average cumulative grade point average is shown by academic program, discipline (CIP2), and award. Note that GPA reporting of an academic program is suppressed if any academic year used on the report has fewer than 5 degrees awarded.

Sample Report. Make choices for your report and select *Apply*. You can modify, export and save reports.

Enrollment Trends by Program Dashboard

The most recent official fall term is Fall 2012.

Select a view: By CIP2 and Program Name

History of Enrollment

Campus	Program Taxon (CIP2)	Academic Program Name	5 Yrs Ago	4 Yrs Ago	3 Yrs Ago	2 Yrs Ago	1 Yr Ago	Current	Five Year Enrollment Change	Five Year % Change
Adirondack	(09) Communication, Journalism, And Related Programs	Media Arts	98	114	117	109	131	141	-43	43.9%
		Radio Broadcasting	1	2	1	1	1	0	0.0%	
	(09) Communication, Journalism, And Related Programs Total		99	116	118	110	131	142	43	43.4%
	(10) Communications Technologies/Technicians And Support Services	Radio-Television Broadcasting	29	22	25	31	31	33	4	13.8%
		(10) Communications Technologies/Technicians And Support Services Total		29	22	25	31	31	33	4
	(11) Computer And Information Sciences And Support Services	Business Information Technology Management	15	17	23	12	3	2	-13	-86.7%
		Computer Science	40	36	58	60	49	45	5	12.5%
		Information Technology	17	22	25	34	43	43	26	152.9%
		Information Technology: Computer Networking	32	36	33	43	44	59	27	84.4%
		Information Technology: Computer Programming	5	5	5	2	1		-5	
	(11) Computer And Information Sciences And Support Services Total		109	116	144	151	140	149	40	36.7%
	(12) Personal And Culinary Services	Culinary Arts	36	33	32	52	53	62	26	72.2%
	(12) Personal And Culinary Services Total		36	33	32	52	53	62	26	72.2%
(13) Education	Teaching Assistant	17	14	17	18	16	8	-9	-52.9%	