

Power of SUNY 2020



A Proposed Performance System
2014

2009-10: Creating *The Power of SUNY*



64 Campus Tour



2009-10: Creating *The Power of SUNY*



Group of 200 traveled to eight Town Hall-style meetings across the state



2009-10: Creating *The Power of SUNY*

Big Hairy Audacious Goal:

SUNY will be a key engine of revitalization for New York State's economy and enhance the quality of life for the state's citizens

SUNY and the Entrepreneurial Century



SUNY and the Seamless Education Pipeline



SUNY and an Energy-Smart New York



SUNY and a Healthier New York



SUNY and the World



SUNY and the Vibrant Community



STRATEGIC PLAN

2010 & BEYOND

the Power of **SUNY**

The State University of New York

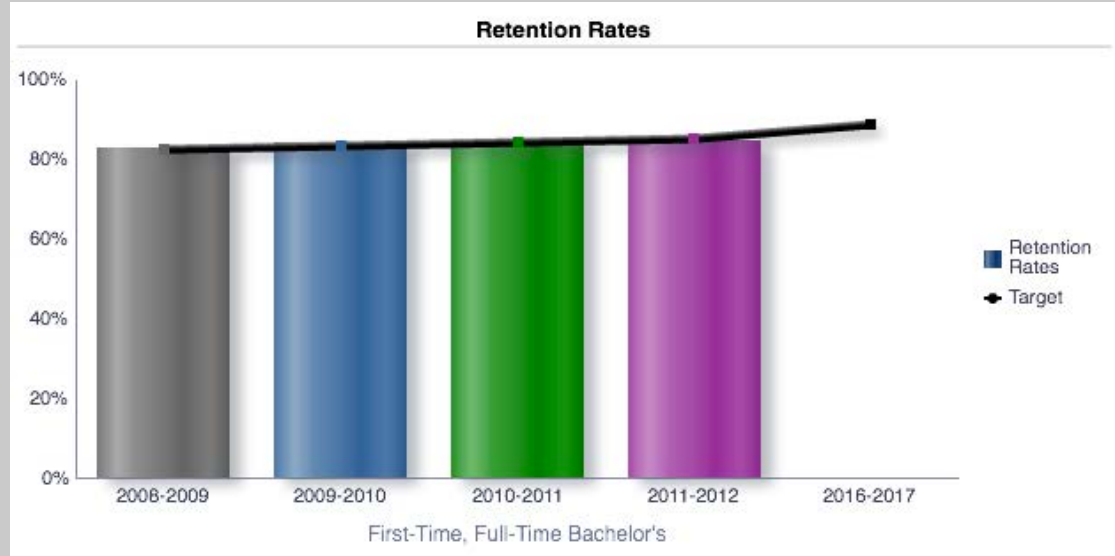
A hand is shown from the bottom, holding a large, glowing blue sphere. The sphere has a bright white light source behind it, creating a lens flare effect. The background is a solid blue color with some faint, out-of-focus circular light patterns.

REPORT CARD
2011

the Power of (SUNY

2010-11: Measuring *The Power of SUNY*

YOU CAN
HOLD US TO IT.



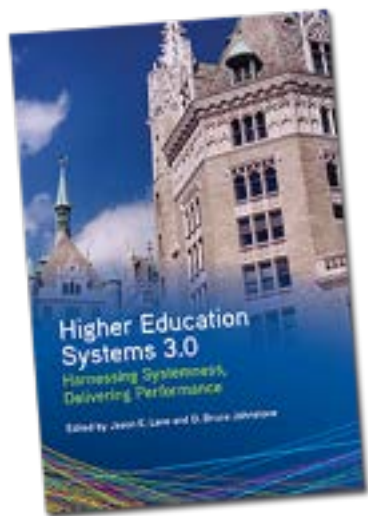
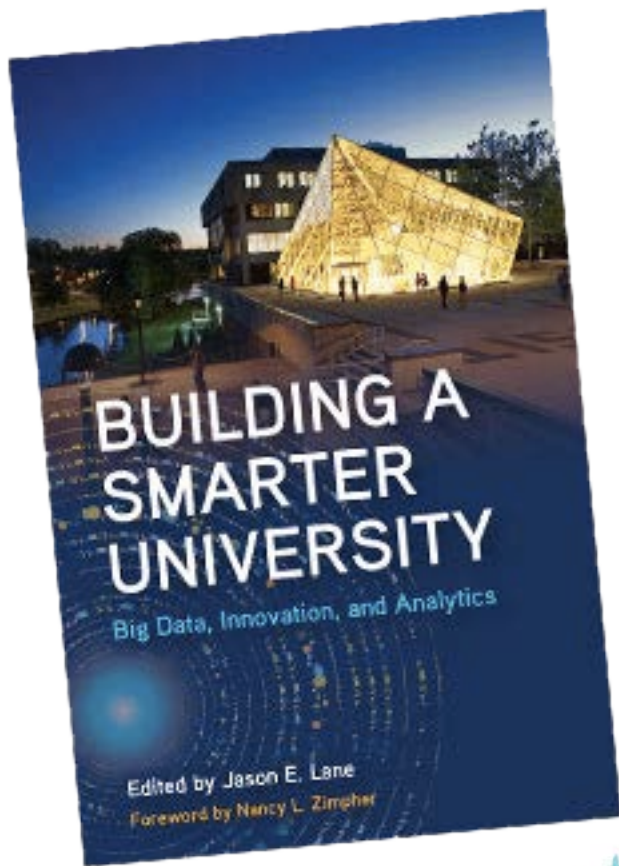
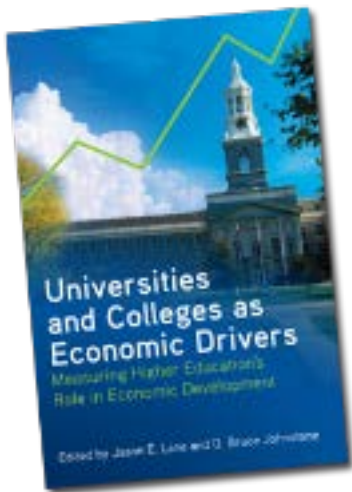
A Competitive SUNY

Diversity Counts

A Competitive NY

2011-12: Legislative Support





HIGHER EDUCATION RECONSIDERED:
EXECUTING CHANGE
TO DRIVE COLLECTIVE IMPACT





The State University
of New York

2011 SUNY State of the University Address

January 18, 2011
Albany, NY

Nancy L. Zimpher
Chancellor



The State University
of New York

2013 State of the University

Tuesday, January 15

2012 STATE OF THE UNIVERSITY ADDRESS

GETTING DOWN TO BUSINESS



2014 STATE OF THE UNIVERSITY ADDRESS

INNOVATION AT SCALE



The State University
of New York

2012-13: Systemness at Work



the Power of

SUNY

**Recognize and Reward
Performance in Key Areas**



Process is Important

Consultation

12/6/12: Presidents'/Provosts' Meeting, Saratoga
05/21/13: Presidents' Meeting, Albany
09/18/13: Board Meeting, NYC
12/2/13: Power of SUNY Refresh, NYC
12/9/13: Power of SUNY Refresh, Albany
12/10/13: Presidents' Meeting, Albany
12/11/13: Power of SUNY Refresh, NYC
12/13/13: Power of SUNY Refresh, Buffalo
05/20/14: Presidents'/Provosts' Meeting
Spring 2014: UFS, FCCC, SA, NYCCAP
9/8/2014: Board of Trustees Meeting
9/11/2014: Presidents' Meeting
9/20/2014: NYCCT Annual Meeting
9/29/2014: SUNY System Administration Town Hall
10/9/2014: FCCC Plenary
10/18/2014: Student Assembly Fall Conference
10/24/2014: University Faculty Senate Fall Plenary
10/26/2014: ACT Annual Conference

Guiding Trustees' Policies

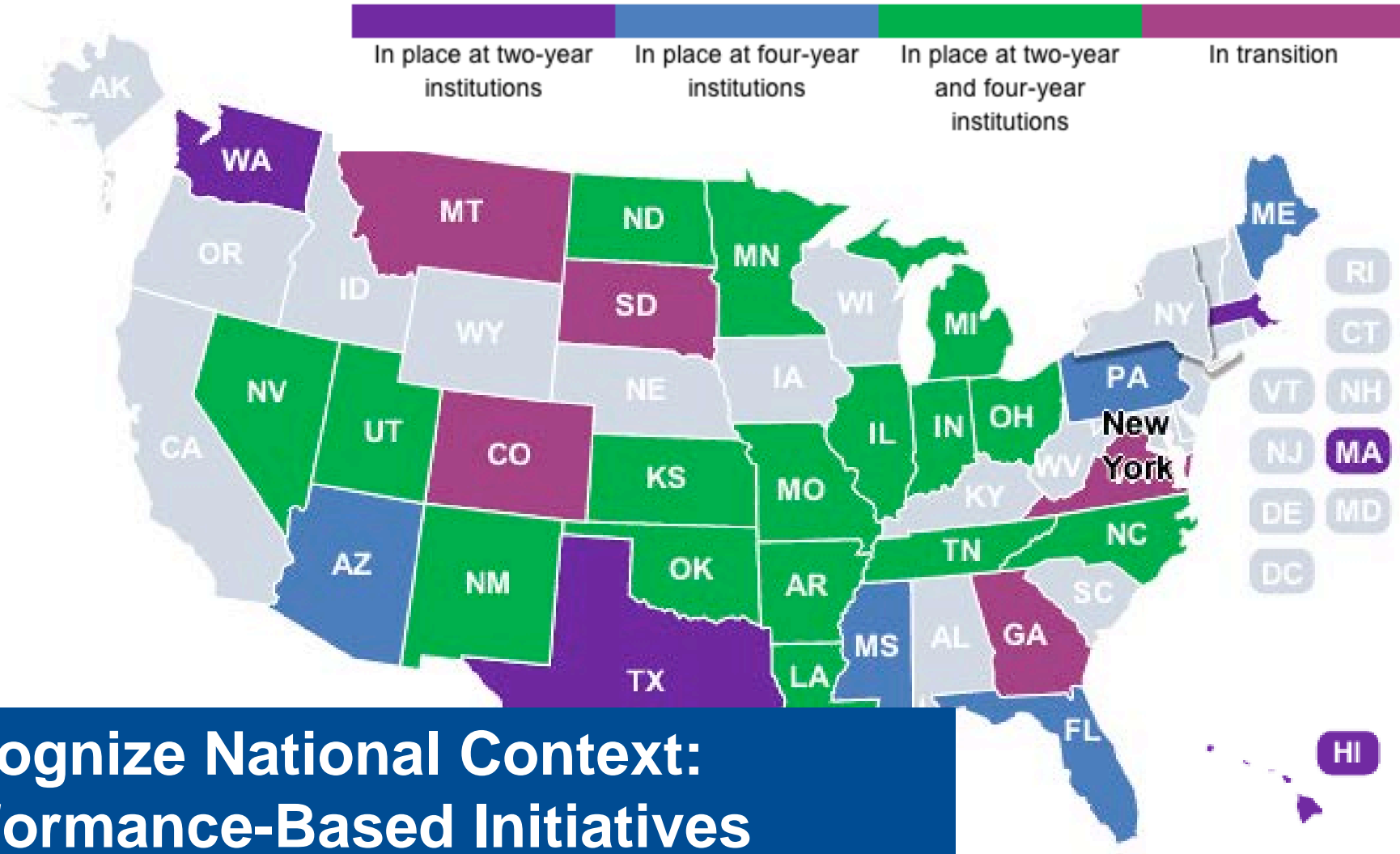
12/17/12: Seamless Transfer Requirements
3/19/13: Open SUNY
05/07/13: Data Transparency & Reporting
09/8/13: Educator Prep Admissions Criteria
01/17/14: Strengthened Non-Credit Remedial Guidelines
05/07/14: Common Core Support
06/17/14: Performance Management & SUNY Salary and Compensation Plan

In place at two-year institutions

In place at four-year institutions

In place at two-year and four-year institutions

In transition



Recognize National Context: Performance-Based Initiatives

Define SUNY's ROI



Kiplinger's PERSONAL FINANCE

BEST VALUE IN PUBLIC COLLEGES
Nine SUNY Schools Make the List

The graphic features the Kiplinger's Personal Finance logo in a bold, sans-serif font. Below the logo, the text 'BEST VALUE IN PUBLIC COLLEGES' is written in a smaller, all-caps font, followed by 'Nine SUNY Schools Make the List' in a slightly larger font. The background of the graphic is a photograph of several students in casual attire standing on a modern college campus with large glass windows.



Guiding Principles



Identify outcomes that are mission critical, understandable, and widely inclusive

Select measures that are easy to track on a regular basis, aligned with existing assessments

Build on existing data collection (Report Card)

Maintain sensitivity to external conditions & mission

Drive continuous improvement

Be ambitious and visionary



Over 116 Metrics Discussed



The Game Plan



Solicit Broad Input

November Board of Trustees Resolution

Advocacy

SUNY

SUNY Excels

Our Proposed Performance System
Demonstrating the Power of SUNY 2020



Five Priority Areas of SUNY Excels

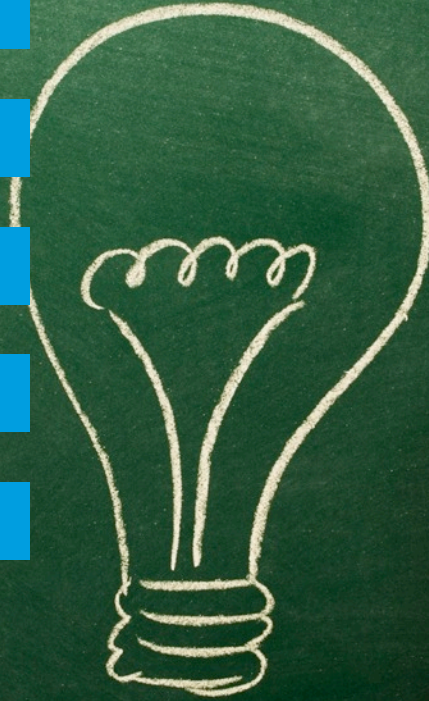
Access

Completion

Success

Research

Engagement



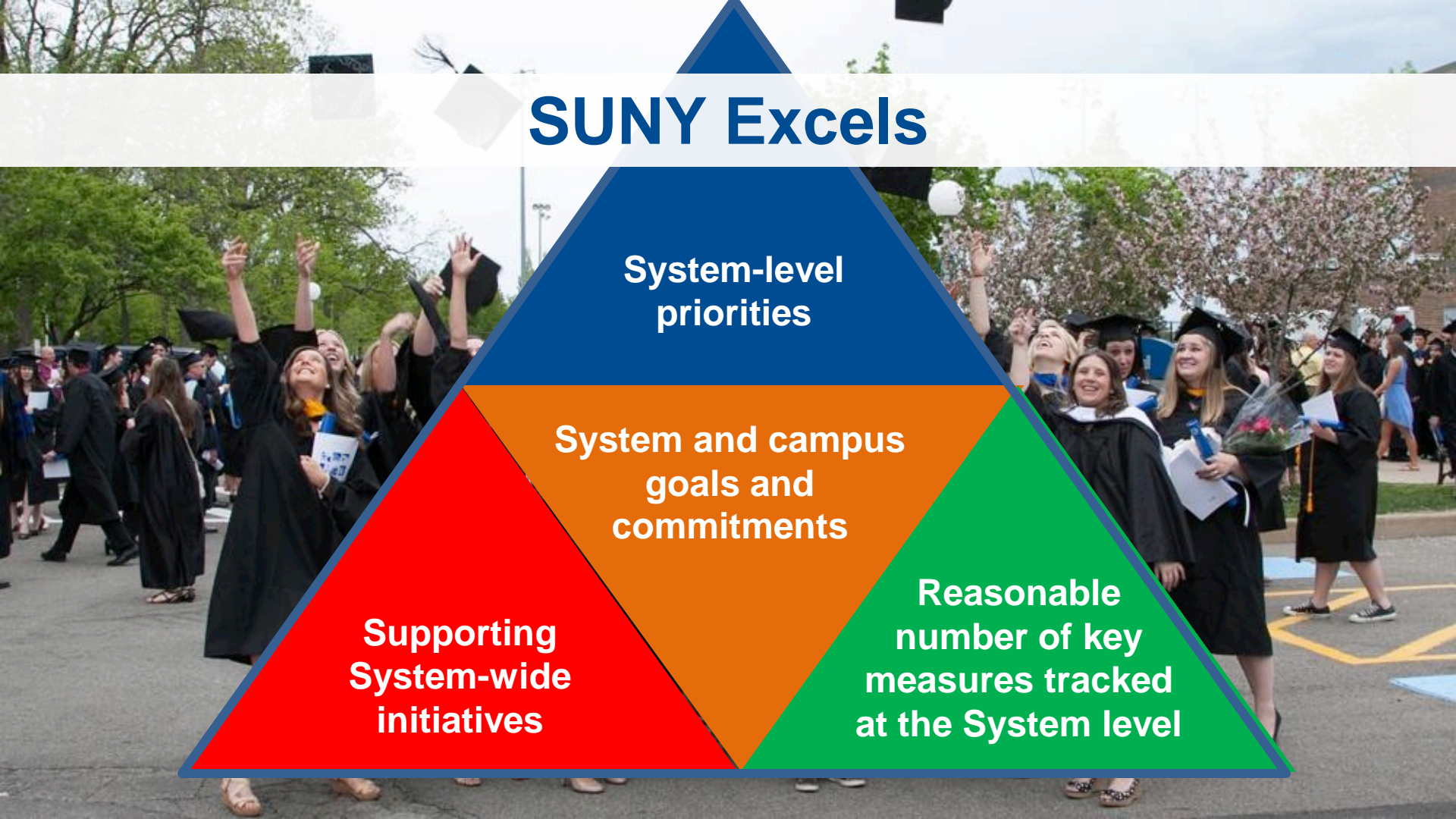
SUNY Excels

**System-level
priorities**

**System and campus
goals and
commitments**

**Supporting
System-wide
initiatives**

**Reasonable
number of key
measures tracked
at the System level**



SUNY Excels



SUNY Excels

**Our Shared Commitment to Excellence:
as a System, Sectors of Campuses and Individual Institutions.
We will excel in our service to students, in the development of
our faculty and staff, and in our support of New York State.**

Access

Completion

Success

Research

Engagement

Access

*“with the broadest possible **access**, fully **representative of all segments of the population** in a complete range of **academic, professional and vocational postsecondary programs**... offered through a **geographically distributed comprehensive system**...”*

Enrollment

Capacity

Diversity

Affordability

Enrollment

Cornell C

SUNY

Typical Fall
Enrollment
16.5%
460,000

Enrollment

CHS (SO)
0.6%
18,000

EOC
0.4%
11,400

ATTAIN
0.5%
14,000

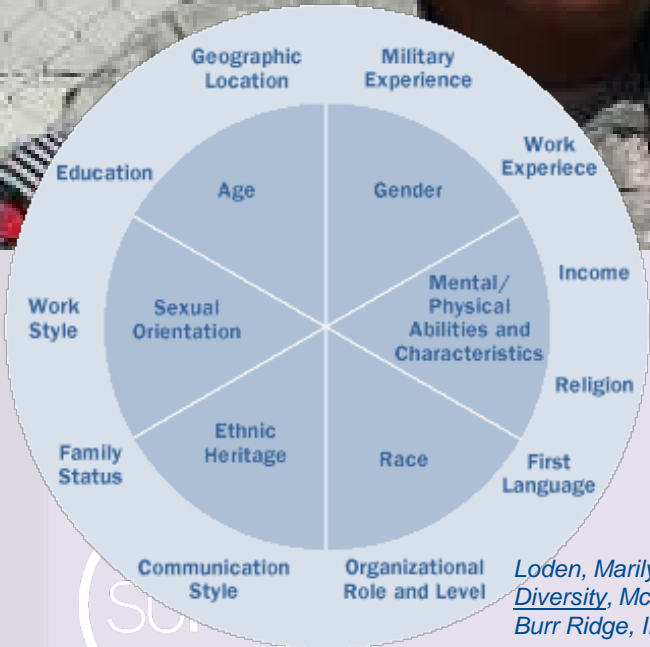
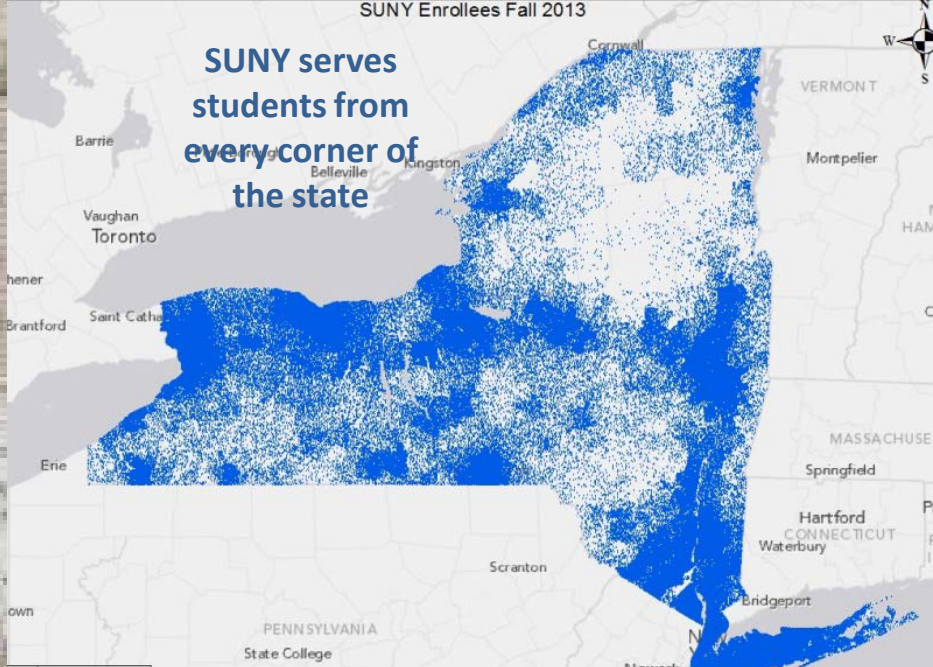
Child
care
0.2%
5,000

Special Auditors
0.1%
2,700

SUNY

Diversity

SUNY serves active military, national guard and reservists and veterans



Diversity in the broadest sense of the word

Loden, Marilyn: *Implementing Diversity*, McGraw Hill-Publishing, Burr Ridge, IL 1996



SUNY serves the youngest members of our communities to the most senior members of our communities, 6 weeks to 92 years

Capacity



OPEN SUNY



Andrew M. Cuomo - Governor

Governor Cuomo Announces \$12 Million for 36 SUNY Campuses to Train Students in High Need Fields

[Printer-friendly version](#)

Funding to Support Training in Engineering, Health Care, Environmental and IT Fields

Albany, NY (June 6, 2013)

Governor Andrew M. Cuomo today announced that 63 programs from 36 SUNY campuses will receive more than \$12 million in funding over the next three years to support workforce development in high-need career fields throughout New York State. The announcement comes on the heels of the Governor's Tax-Free NY Initiative, game-changing program that will transform SUNY campuses and university communities across the state into tax-free communities that attract start-ups, venture capital, new business, and investments from across the world.

ATTEND SUNY - WHAT IS SUNY? - WHY DOES SUNY MATTER? - Search - SUNY A-Z - [Home.SUNY.edu](#)

SUNY The State University of New York

Apply ▾
Campuses ▾
Programs ▾

Undergraduate Program Search

[← Back to Academic Programs](#)

The State University of New York offers an amazing depth and breadth of undergraduate academic programs-over 5,000 programs in all. We invite you to explore these programs and confirm for yourself that just about every academic program you could pursue is available somewhere within SUNY.

Two Ways to Search

For details about how to use our Program Search, [view the instructions](#).

Affordability

DISCOVER Value

The State University of New York

www.suny.edu/student • 800.342.3811

SUNY

The State University of New York
FINANCIAL AID TIMELINE 2012-13
DISCOVER Value

As you move through your senior year, we hope this financial aid timeline will help you become familiar with the aid application process. Dates may vary, so check with your campuses of interest to confirm requirements and deadlines. Apply for financial aid early and online if possible.

SENIOR YEAR

JULY (or earlier - in your Junior year)

- To help you calculate the price of college use: www.fafsa4caster.org, www.fafsa.ed.gov, or SUNY net price calculator @ www.suny.edu/howmuch.
- Begin to search for scholarships. The best place to find scholarship information is at your colleges of interest, parents' places of employment, local libraries, high schools, and the web. Web sites to start your search:
 - www.fastweb.com
 - www.studentaid.ed.gov
 - www.scholarship.com
 - www.collegeboard.org
 - www.gocollege.com

AUGUST

- Request admissions applications and information from colleges.
- Create a calendar of all deadlines:
 - admissions
 - scholarships
 - financial aid applications.
- Create a schedule to visit colleges.

NOVEMBER

- You and one parent should request a federal student aid PIN number at www.pin.ed.gov.

DECEMBER

- Start a financial aid folder to keep all financial aid documents organized. Information you should collect for your financial aid folder:
 - Your social security number
 - Your parents' social security numbers and dates of birth
 - Your parents' marital status
 - Tax returns for you and your parents
 - W2s for you and your parents
 - Bank, stock, real estate, and business records for you and your parents
 - Your driver's license number
 - Your alien registration number (for non-U.S. citizens)
 - PINs for you and one parent

JANUARY

- Parents should be prepared to complete their income tax returns as early as possible. They are required for most financial aid applications.
- File the FAFSA now, at www.fafsa.ed.gov.
 - Estimate your income, if your parents have not yet filed their tax returns.
 - If you need a paper application, call 1-800-4-FED-AID.
- New York State residents should apply for the New York State Tuition Assistance Program (TAP). Use the link on the FAFSA confirmation page to go to TAP on the Web. If you need more information, visit www.hesac.org.

FEBRUARY

- If you have completed the FAFSA:
 - Watch your email for a notice from the U. S. Department of Education with a link to access your Student Aid Report (SAR).
 - Make corrections to the FAFSA using the IRS Data Retrieval Tool.
 - Call 1-800-4-FED-AID, if you have not received your SAR.
 - Advise financial aid offices at the colleges you have listed on the FAFSA of any unusual circumstances which may affect your family's ability to pay for college, such as unemployment or unusual medical expenses.
- If you have not completed the FAFSA, do so now at www.fafsa.ed.gov.

MARCH

- Watch the mail for financial aid award letters (into April).

APRIL

- Compare financial aid packages from different schools and choose your college.

MAY

- By May 1, notify colleges of your enrollment decision. Accept both offers of admission and financial aid at your college of choice.

JUNE - JULY

- Apply for federal student loans, if applicable.



Completion

A photograph of two young graduates, a woman on the left and a man on the right, both wearing black graduation caps and gowns. They are smiling broadly at the camera. The woman is wearing a red, white, and blue beaded necklace. The background is slightly blurred, showing other graduates and greenery.

Enable all those we serve to achieve their goals. Increase degree/award production, on time degree completion, non-degree completion and services, and ensure seamless transfer.

Completion

Persistence

Transfer

Time to Degree

Completion, Persistence, Transfer

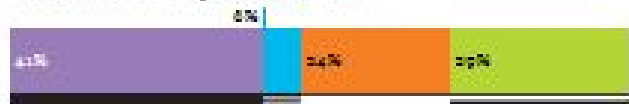
The Student Achievement Measure (SAM) provides a comprehensive picture of student progress on their path to earning a college degree or certificate. As compared to the limitations of typical graduation rate measures, SAM reports more outcomes for more students. [learn more »](#)

ASSOCIATE / CERTIFICATE MODEL

First-time-at-Institution, Full-time Students Starting Fall 2007

Number of students: 2,689

roll over each bar for detail data



within 6 years

0% 10% 20% 30% 40% 50% 60% 70% 80% 90% 100%

- Graduated: Reporting Institution
- Enrolled: Reporting Institution
- Transferred: Other Institution
- Current Status Unknown

BACHELOR'S MODEL

First-time-at-Institution, Part-time Students Starting Fall 2007

Number of students: 2,584

roll over each bar for detail data



within 6 years

0% 10% 20% 30% 40% 50% 60% 70% 80% 90% 100%

- Graduated: Reporting Institution
- Enrolled: Reporting Institution
- Transferred: Other Institution
- Current Status Unknown

Success

SUNY AVIATION

Robust system and campus supports for student success; SUNY students are prepared for the most successful possible launch into further education, career and citizenship.

Student Supports

Applied Learning

Multi-Cultural Experiences

Degree Progression /
Additional Credentialing

Financial Literacy

Employment / Earnings

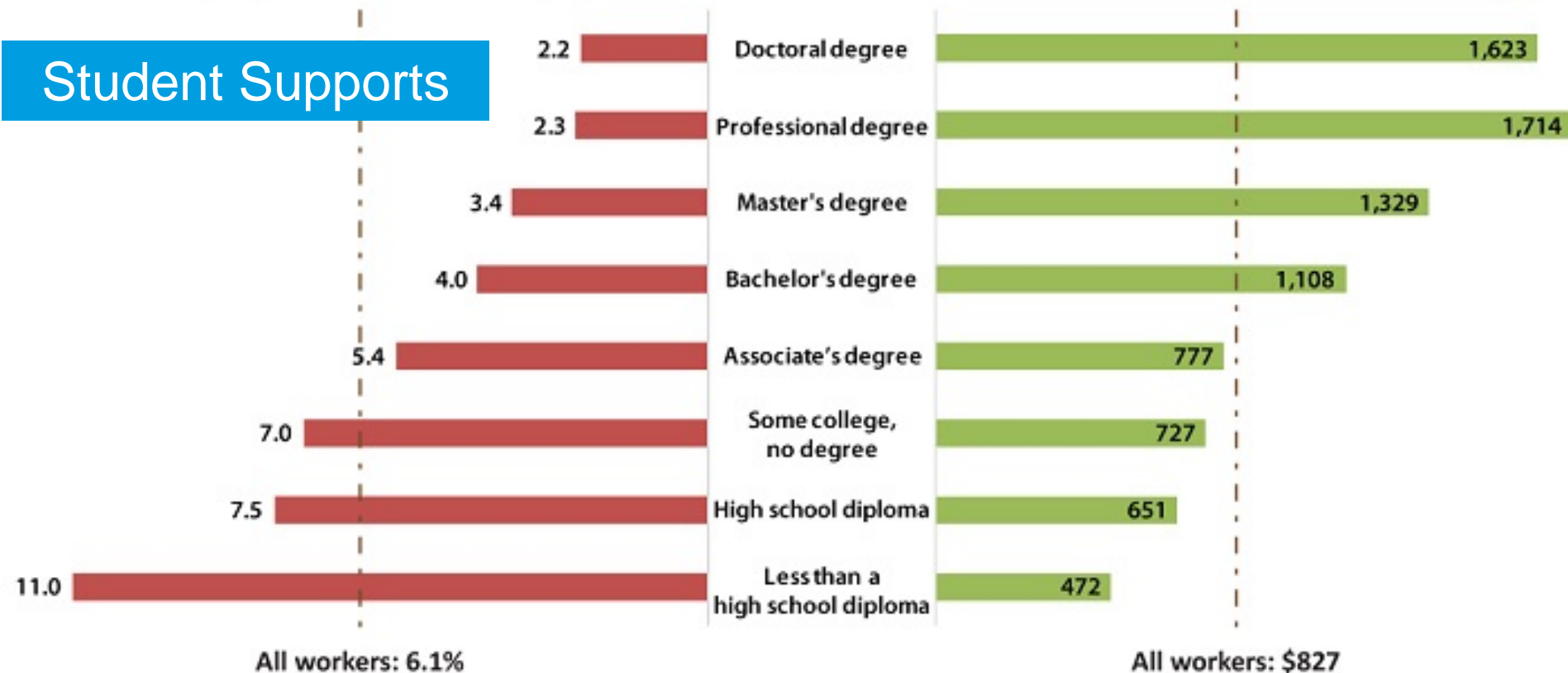
SUNY

Earnings and unemployment rates by educational attainment

Unemployment rate in 2013 (%)

Median weekly earnings in 2013 (\$)

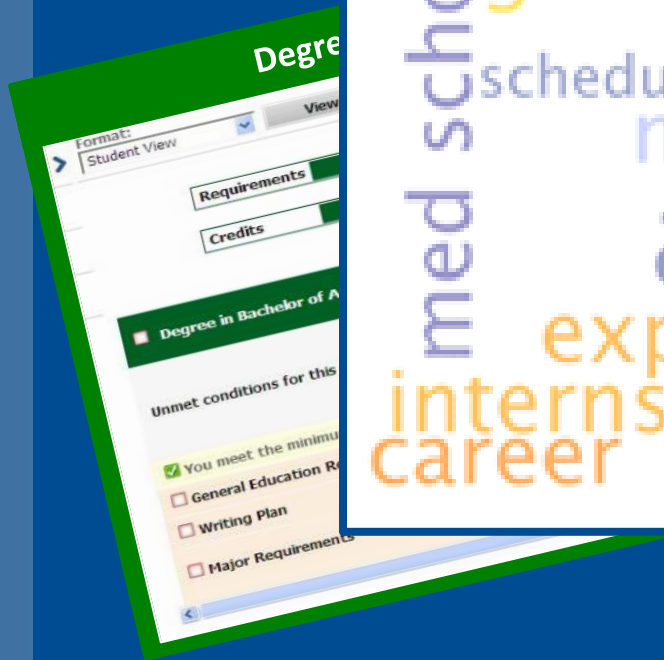
Student Supports



Note: Data are for persons age 25 and over. Earnings are for full-time wage and salary workers.

Source: Current Population Survey, U.S. Bureau of Labor Statistics, U.S. Department of Labor

Degree Progression / Additional Credentialing



grad school
counseling
schedule
mini-appointment
med school
appointment
exploration
internships
career
law school
advising



How English majors
can find happiness,
success, and a real job
TIM LEMIRE

Applied Learning

Multi-Cultural Experiences



SUNY WORKS



Undergraduate Research Symposium
SUNY University Faculty Senate
Faculty Council of Community Colleges

1ST ANNUAL CONFERENCE ON
FOREIGN LANGUAGE TEACHING

Study Abroad
The world in your hands

The graphic features a collage of images. At the top, a woman with blonde hair is looking towards a man with dark hair. Below this, there are several smaller images: a globe, a person, a car, and a building. The text "1ST ANNUAL CONFERENCE ON FOREIGN LANGUAGE TEACHING" is prominently displayed in green and blue. At the bottom, the text "Study Abroad" is in large blue letters, with "The world in your hands" in smaller black letters below it.

Financial Literacy

Plattsburgh
STATE UNIVERSITY OF NEW YORK



Smart Track
Empowered Financial Aid Planning
Award Letter

ESTIMATED COST OF ATTENDANCE IN THE 2013/14 ACADEMIC YEAR

(Costs in thousands)

Estimated Cost of Attendance \$23,243 per year

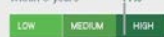
Costs*	Direct Costs	Indirect Costs
Tuition and fees	6,593	
Housing and meals	14,400	0
Estimated books and supplies		1,200
Estimated transportation		600
Estimated other educational costs		450

*Costs will vary based on enrollment status.

COLLEGE OVERVIEW

Graduation Rate

Percentage of full-time students who graduate within 6 years



GRANTS AND SCHOLARSHIPS OFFERED — ESTIMATED GIFT AID

(Gifts subject to change based upon verification, enrollment, confirmation, and legislative changes)

Total Grants and Scholarships (No payment required) \$7,600 per year

	Term 1	Term 2	Term 3	Total
Institutional (SUNY School) Grant	500	500	50	1,050
IAP	1,000	1,000	50	2,050
PELL	1,725	1,725	50	3,500
SEOG	250	250	50	550
SUNY Tuition Credit	75	75	50	200
Other scholarships	100	100	50	250

LOAN DEFAULT RATE

Percentage of borrowers entering repayment and defaulting on their loan.



ESTIMATED REMAINING COST AFTER GRANTS AND SCHOLARSHIPS

(Cost of attendance minus total grants and scholarships)

Net Cost \$15,643 per year

MEDIAN BORROWING

Students at (school name) typically borrow \$xxxx in Federal loans over six years.

The Federal loan payment for this amount is approximately \$xxx.xx per month. Your borrowing may be different.

LOANS OFFERED

Total Loans (Repayment Required) \$5,500 per year

Loan Type	Term 1	Term 2	Term 3	Total
Federal Direct Subsidized Loan	1,550	1,250	700	3,500
Federal Direct Unsubsidized Loan	1,000	950	50	2,000

NOTE: You can borrow less than the recommended loan offer.

REPAYING YOUR LOANS

To learn more about loan repayment choices and work out your Federal Loan monthly payment, go to:

SUNY FINANCIAL AID DAYS 2014

www.suny.edu/studentevents

Saturday, February 22

46 locations throughout
New York State

Prospective Students
Click here to go to



Smart Track
Empowered Financial Aid Planning

Financial Literacy Tools



Smart TrackSM
Empowered Financial Aid Planning



Research

“...the state university...encourages and facilitates basic and applied research for the purpose of the creation and dissemination of knowledge vital for continued human, scientific, technological and economic advancement...”

Research Productivity

External Investment

Philanthropic Support

SUNY System, Campus and Faculty Regarded as Thought Leaders

Research Productivity



SUNY High Needs Grant Program



Empire Innovation Program



Engagement

A photograph of a symphony orchestra performing in a concert hall. The musicians are seated in rows, playing various instruments including violins, violas, cellos, double basses, trumpets, and trombones. The conductor is visible in the foreground on the left. The background shows the architecture of the concert hall, including a balcony and a doorway.

SUNY's engagement – it's economic, cultural and societal impact on New York State and beyond. Sharing SUNY expertise with the business, agricultural, governmental, labor and nonprofit sectors of the state ...for the purpose of enhancing the well-being of the people of the state of New York...

START-UP NY

Scholarship, Discovery
& Innovation

Commercialization

Workforce Development

Community Service

Cultural Contributions

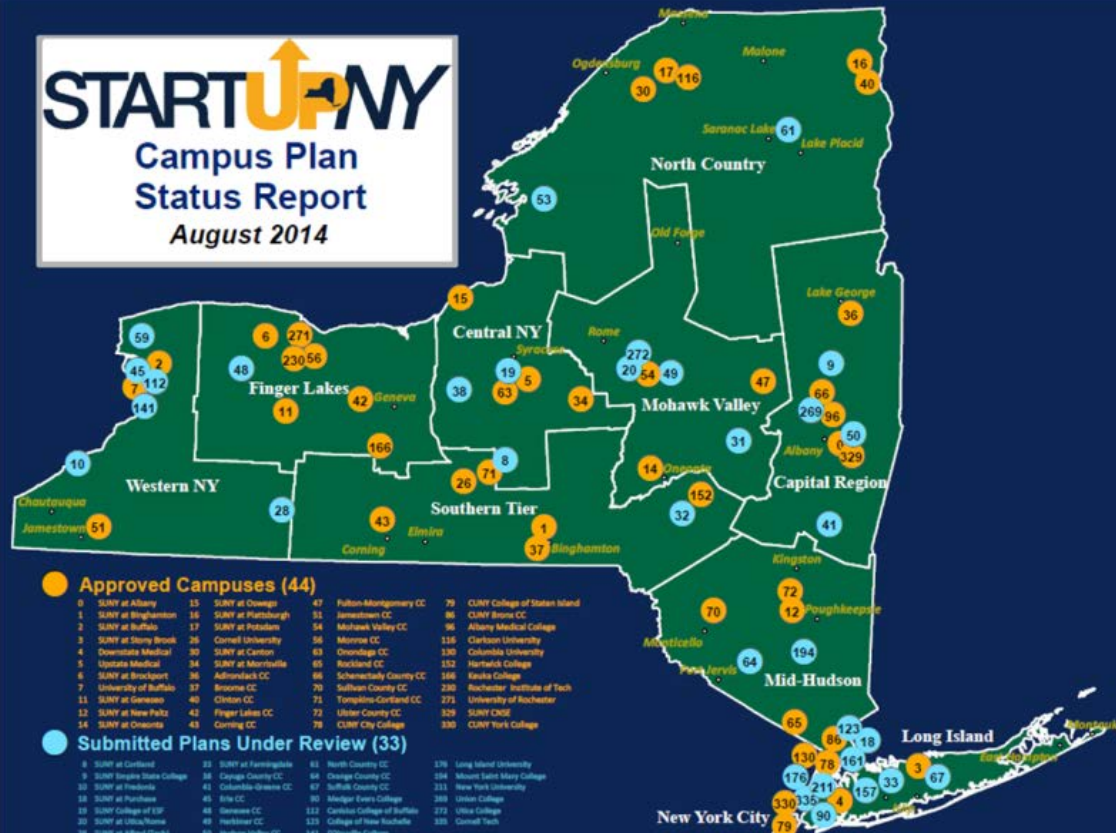
START-UP NY

Scholarship,
Discovery
& Innovation

Commercialization



STARTUP NY Campus Plan Status Report August 2014



Approved Campuses (44)

- 0 SUNY at Binghamton
- 1 SUNY at Buffalo
- 2 SUNY at Stony Brook
- 3 SUNY at Oswego
- 4 Oswego Medical
- 5 Upstate Medical
- 6 SUNY at Broome
- 7 University of Buffalo
- 11 SUNY at Genesee
- 12 SUNY at New Paltz
- 14 SUNY at Oneonta
- 15 SUNY at Plattsburgh
- 17 SUNY at Potsdam
- 26 Cornell University
- 30 SUNY at Canton
- 34 SUNY at Morrisville
- 36 Adirondack CC
- 37 Broome CC
- 40 Clinton CC
- 42 Finger Lakes CC
- 43 Corning CC
- 47 Fulton-Montgomery CC
- 51 Jamestown CC
- 54 Mohawk Valley CC
- 56 Morris CC
- 58 Onondaga CC
- 65 Rockland CC
- 66 Schenectady County CC
- 70 Sullivan County CC
- 71 Tompkins-Cortland CC
- 73 Ulster County CC
- 79 CUNY City College
- 79 CUNY College of Staten Island
- 86 CUNY Bronx CC
- 96 Albany Medical College
- 116 Clarkson University
- 130 Columbia University
- 152 Hartwick College
- 166 Rensselaer Institute of Tech
- 171 University of Rochester
- 329 SUNY DCE
- 330 CUNY York College

Submitted Plans Under Review (33)

- 8 SUNY at Cortland
- 9 SUNY Empire State College
- 10 SUNY at Fredonia
- 18 SUNY at Purchase
- 20 SUNY College of ESP
- 22 SUNY at Ulster/Name
- 29 SUNY at Alfred/Trent
- 31 SUNY at Coldwell
- 32 SUNY at Delhi
- 33 SUNY at Farmingdale
- 38 Oswego County CC
- 41 Columbia-Greene CC
- 45 SUN CC
- 46 Seneca CC
- 48 Hamilton CC
- 50 Hudson Valley CC
- 52 Warren CC
- 53 SUNY at Allegany
- 54 Orange County CC
- 57 Saratoga County CC
- 60 Mohawk Valley College
- 62 College of Buffalo
- 113 College of New Rochelle
- 143 D'Youville College
- 157 Hofstra University
- 163 Iona College
- 176 Long Island University
- 194 Mount Saint Mary College
- 211 New York University
- 285 Utica College
- 333 Cornell Tech



SUNY Discoveries



Workforce Development



TAACCCT

TRADE ADJUSTMENT ASSISTANCE COMMUNITY COLLEGE
AND CAREER TRAINING GRANT PROGRAM

Cultural Contributions

Community Service



SUNY Maritime students carry rescue boats during Hurricane Sandy

Next Steps

Access

Completion

Success

Research

Engagement

Finalize Metrics/Targets

Campuses and System Commit to Goals

Areas for Targeted Investment Identified

Advocacy

SUNY Excels

Q & A
Discussion

